


SOUTHBROOK VINEYARDS

Welcome to Southbrook's "Green" Vineyard & Winery—Biodynamic, Organic and LEED Gold Certified.

LEED stands for the Leadership in Energy and Environmental Design Green Building Rating System™




1. DAYLIGHTING
The east and north faces of the building, which don't get direct sunlight in the hottest part of the day, are floor-to-ceiling glass to let in the maximum amount of natural light, reducing the need for electric lighting, letting in the wonderful view, and contributing to people's well-being.

★ LEED




2. BIODYNAMIC & ORGANIC
Growing our grapes and making our wine biodynamically and organically means we have a healthy, natural vineyard that's tended by hand and helped by our woolly and feathered friends in the rows. Better vines, better wine, better world.




4. WATER MANAGEMENT & CONSERVATION
To minimize water use, there is no irrigation of the landscaping plants outside. Inside the building are automatic faucets, low-flush urinals, and dual-flush toilets.

★ LEED



3. ENERGY CONSERVATION
To reduce the amount of energy that goes into the heating and cooling of our building, the walls are highly insulated, the windows are double-glazed with a low-E coating that keeps summer sunlight out and winter heating in, and there are deep roof overhangs that shade the building.

★ LEED

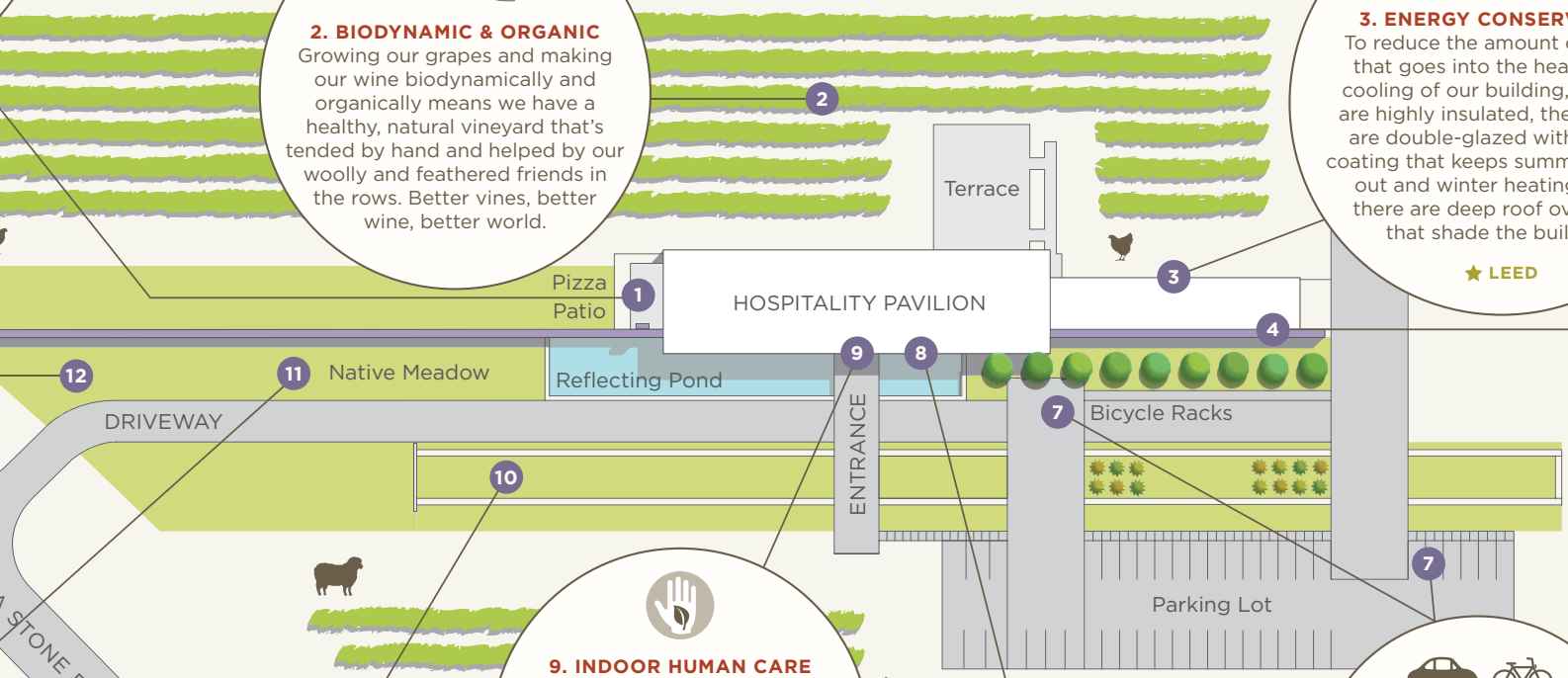



5. SUSTAINABLE CONSTRUCTION
15% of our construction material was made from recycled materials, and 20% of the construction material was manufactured within 800 km of the site to minimize transportation costs. Recyclable material from our construction waste was separated and not landfilled, and all excavation soil was re-used on the property instead of being dumped off-site.


★ LEED



12. OUTDOOR LIGHTING
Our lighting is night-sky friendly—it shines downwards so there is no light pollution up into the air. Light pollution wastes energy, obscures the stars and may interfere with birds' migration.

11. NATIVE MEADOW
Our long grasses and wildflowers are a crucial part of creating a connected biosphere of plants, birds and insects which contribute to the health of our biodynamic vineyard. Reduced mowing means reduced fossil fuel use and emissions, further reducing our carbon footprint.



10. BIO-SWALE
This long drainage ditch is planted with native wetland plants which break down the pollution from the stormwater collected from the access road and parking lots. The water is potable by the time it flows to the municipal drainage ditch.

★ LEED



9. INDOOR HUMAN CARE
To keep people inside the building healthy, all the paints, glues, sealants and composite wood used in construction were low VOC-emitting products. The cleaning products we use are environmentally friendly.

★ LEED



8. WHITE REFLECTIVE PVC ROOF
This keeps the building cooler and reduces the "heat island effect" (a problem with normal dark roofs which soak up the sunlight and radiate it back as heat into the air and the building.)

★ LEED



7. FRIENDLY TRANSPORTATION
We have bicycle racks for guests and staff who ride to work, as well as designated car-pool parking spots.

★ LEED



6. WETLAND TREATMENT SYSTEM
Because the vineyard is not on the Town's sewage line, our wetland system treats waste water on site and disperses the purified water into the surrounding soil.

★ LEED